



Alternatives

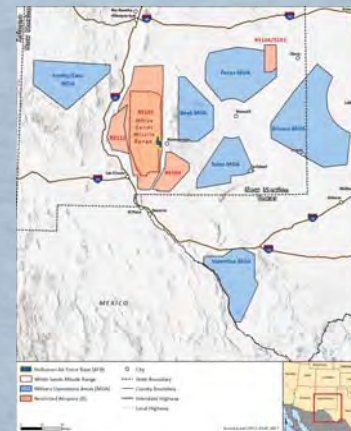
Alternative Identification Process

The Air Force developed a set of selection standards for the screening and identification of possible SUA that could be modified in order to optimize IQT training in the vicinity of Holloman AFB. Alternatives carried forward met the following criteria:

- Utilize Air Force Scheduled Airspace
- Maximize Training Time/Minimize Transit Time
- Required Airspace Size and Configuration
- Limit Impacts to Civil Aviation

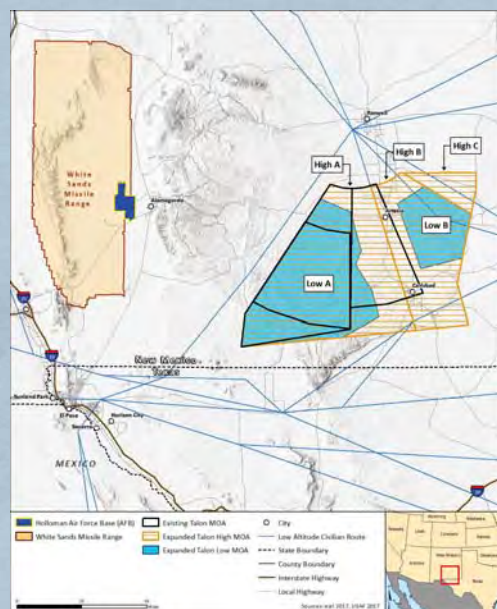
Summary of Alternative Screening Analysis						
Criteria	Valentine MOA*	Bronco MOA*	Talon MOA	Smitty/Cato MOA	Beak MOA	Pecos MOA
1. Utilizes Air Force scheduled airspace?	Yes	Yes	Yes	Yes	Yes	Yes
2. Maximizes training time and minimizes travel time?	No	No	Yes	Yes	Yes	Yes
3a. Required size and configuration - meets vertical limits or could be expanded to meet?	Not evaluated	Not evaluated	Yes	Yes	No	Yes
3b. Required size and configuration - meets horizontal limits or could be expanded to meet?	Not evaluated	Not evaluated	Yes	Yes	No	No
4. Expansion would limit impacts to civil aviation?	Not evaluated	Not evaluated	Yes	Yes	No	No
Carry Forward?	No	No	Yes	Yes	No	No

*Valentine and Bronco MOAs exceeded the required travel distance. Since these MOAs were too far to fully support IQT, it was not necessary to evaluate the remaining criteria.



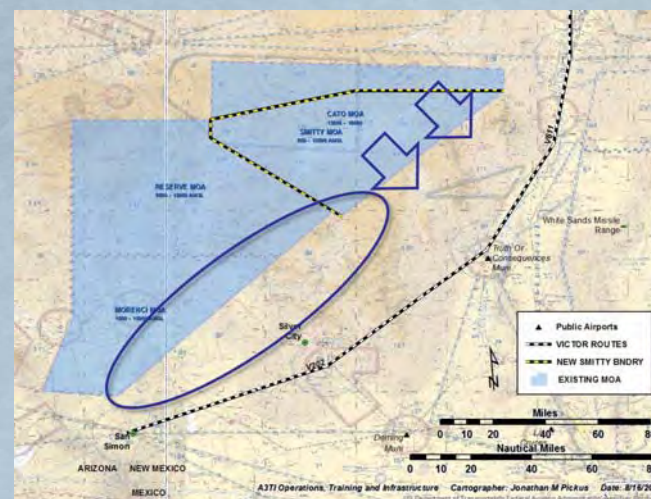
No Action Alternative

Under the No Action Alternative, there would be no airspace modifications in support of IQT missions at Holloman AFB. Aircrews would continue to use existing airspace to the extent practicable. This alternative does not meet the purpose and need but is carried forward in accordance with NEPA regulations.



Alternative 1: Expand Talon MOA

- Reconfigure and expand Talon MOA to the south and east
 - Floor 500 feet AGL
 - Ceiling 18,000 feet above MSL
- Raise floor of existing MOA from 300 feet to 500 feet AGL, return lower 200 feet of airspace to the National Airspace System
- Assign ATCAA above the MOA expanding the usable airspace when requested
- Up to 10,000 sorties annually
- Use of chaff and flares (flares would not be used below 2,000 feet AGL)



Alternative 2: Expand Cato/Smitty MOA and Create Lobos MOA

- Reconfigure and expand Cato/Smitty MOA to the southeast; create new Lobos MOA adjacent to existing Reserve and Morenci MOAs
 - As low as 500 feet AGL
 - Ceiling 18,000 feet above MSL
- Lobos MOA and Cato/Smitty MOA used concurrently as one MOA for IQT
- Return northern portion of Cato/Smitty MOA to National Airspace System
- Assign ATCAA above MOAs expanding usable airspace when requested
- Continue to observe current altitude limitations for overflight of Federal Wilderness Areas
- Up to 10,000 sorties annually
- Use of chaff and flares (flares would not be used below 2,000 feet AGL)